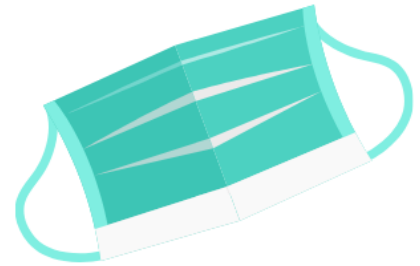


Riverside County Public Health Amended Orders on Face Coverings

Effective May 1, 2020



FACE MASKS ARE NOT REQUIRED:

- At home
- In the car alone or with members of your own household
- Outdoors, walking, hiking, bicycling, running or playing tennis when complying with social distancing and when a face covering is readily accessible
- By residents with a health condition whose medical doctor has advised against wearing a face covering.

FACE MASKS ARE REQUIRED:

- Waiting in line to go inside a store
- Shopping at a store
- Picking up food at a restaurant
- On public transportation (or waiting for it)
- In a taxi or rideshare vehicle
- Seeking healthcare
- Going into facilities allowed to stay open
- Working an essential job that interacts with the public

BUSINESSES MUST:

- Require their employees, contractors, owners, and volunteers to wear a face covering at the workplace and when performing work off-site
- Inform customers about the need to wear a face covering, including posting signs and advising those in line or in the store
- Take reasonable steps to keep people who are not wearing a face covering from entering their business